

**B3**  
**AC & DC LINEAR SOLENOID**

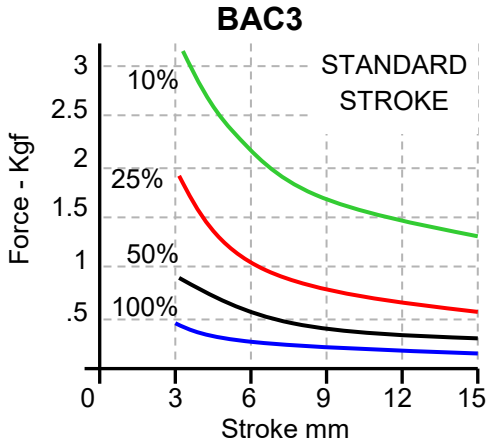
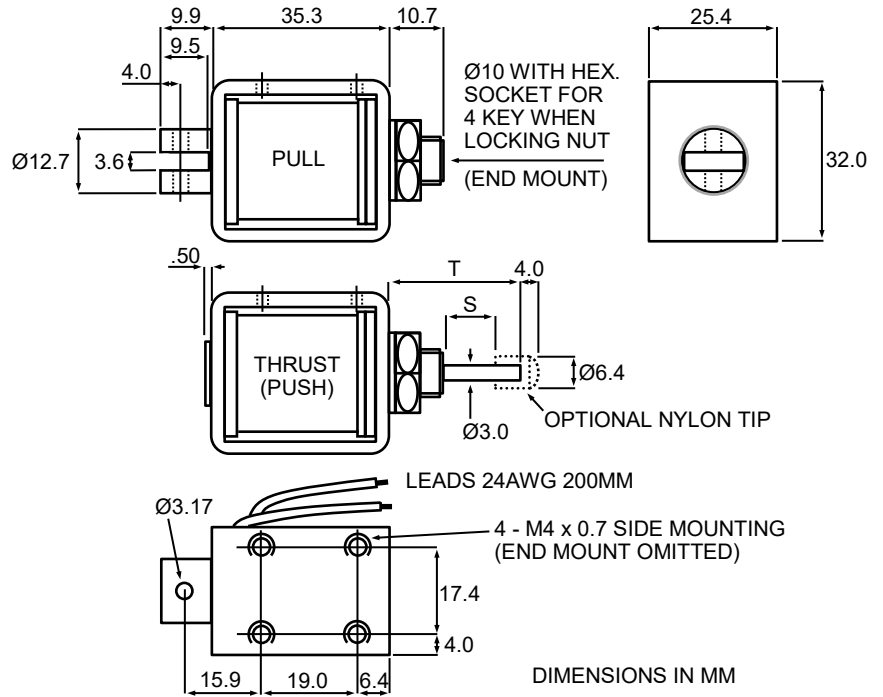
**Availability**  
AC or DC Standard Stroke  
PULL - THRUST - PULL & THRUST  
DC Long Stroke

**Solenoid shown in energised position**

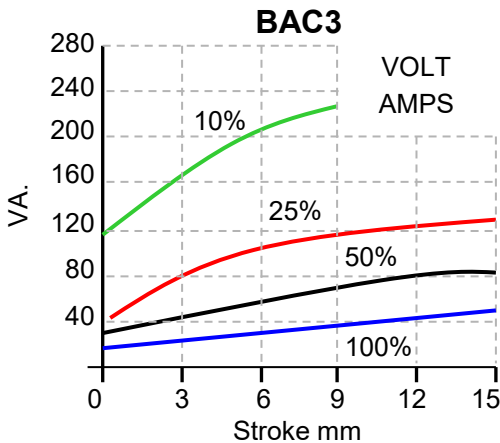
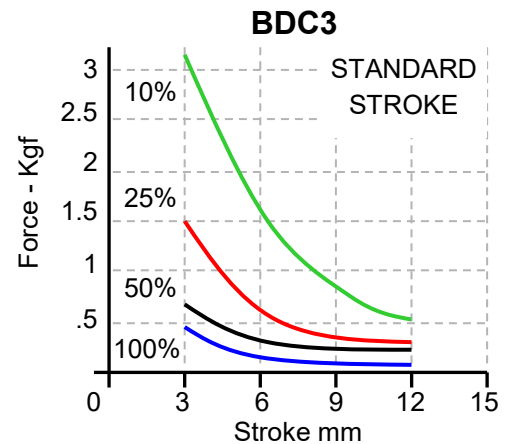
	Dim 'T'	'S'
BAC3	26	10.5
BDC3	32	16.6

Weight complete 156g  
Plunger weight 35g max

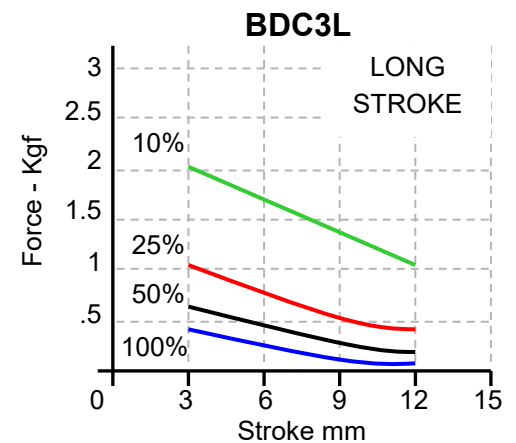
Forces shown are at working temperature



**AC Closed VA**  
100% Rtg = 9VA  
50% Rtg = 20VA  
25% Rtg = 40VA  
10% Rtg = 100VA



**DC Watts**  
100% Rtg = 6.5W  
50% Rtg = 13W  
25% Rtg = 26W  
10% Rtg = 65W



\*\* Please note: Fixing, plunger coupling, thrust rods and lead length can all be customised \*\*  
We reserve the right to alter or amend designs without prior notice.

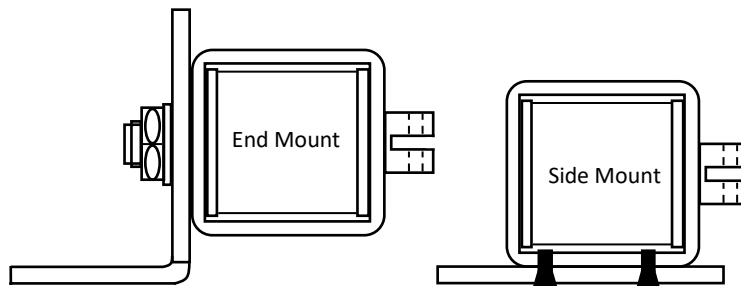
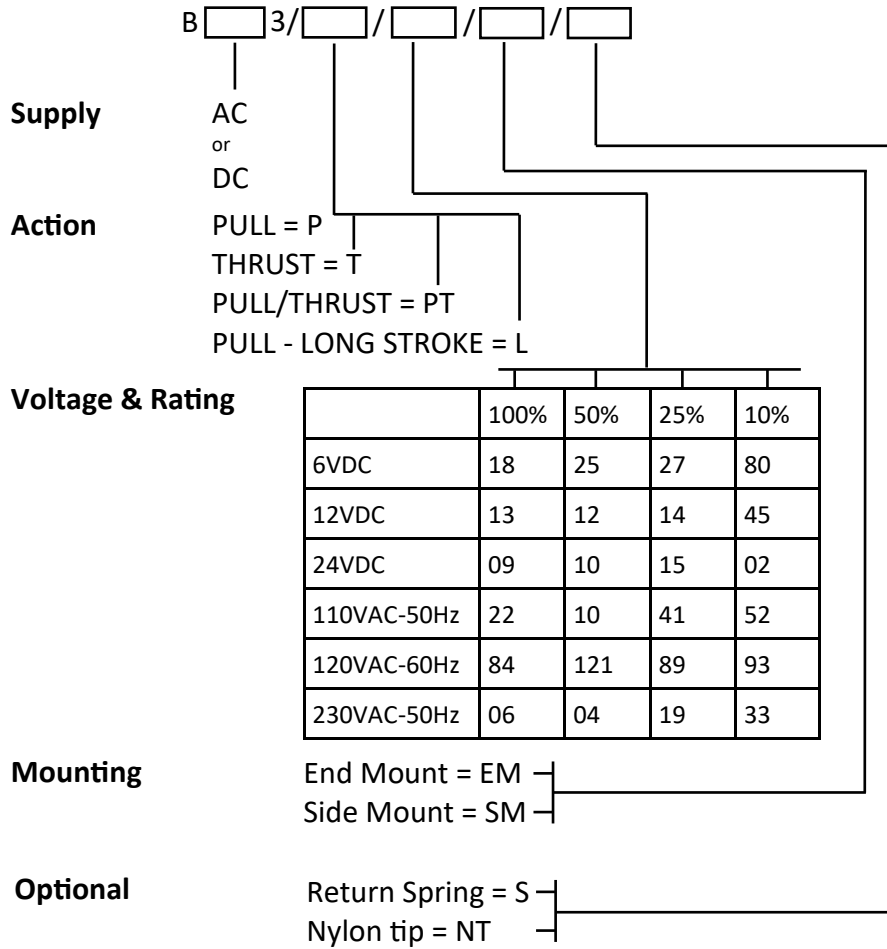
**HE & BS Benson Ltd**

1 Laureate Industrial Estate, Exning Road, Newmarket, Suffolk UK CB8 0AR

+44(0)1638 663535 — 663130 ✉ sales@bensonsolenoids.co.uk 🌐 www.bensonsolenoids.co.uk

# CODING

Please use the standard coding below when advising your design requirement.



Example - BDC3 / P / 09 / SM / S

Other voltages are available on request.

Fixing, plunger coupling, thrust rods and lead length can all be customised.

All solenoids come with flying leads as standard, should you require spade connectors please contact our sales team.

*We reserve the right to alter or amend designs without prior notice.*

**HE & BS Benson Ltd**

1 Laureate Industrial Estate, Exning Road, Newmarket, Suffolk UK CB8 0AR

+44(0)1638 663535 — 663130 ✉ sales@bensonsolenoids.co.uk 🌐 www.bensonsolenoids.co.uk